

# Transfer Switching Equipment

by Socomec



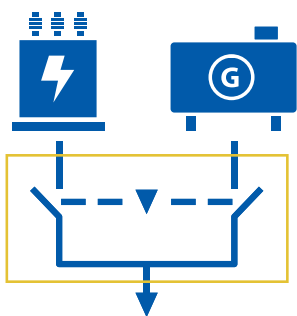
When  
energy  
matters

 **socomec**  
Innovative Power Solutions

# Choose the **TSE expert**

---

Constant power availability keeps your activity **safe and efficient**.



At Socomec, we have been **designing, manufacturing and testing** switchgear since 1922 and guarantee safe, reliable and long lasting Transfer Switching Equipment (TSE) for your electrical installation. All our solutions are fully compliant with **Class PC of IEC 60947-6-1**, the international product standard for TSE. Today, major integrators worldwide secure all types of installations with a Socomec transfer switch. Each day their smile is on knowing that their operations will always keep on running.



**More than 3 million** installations using Socomec TSE worldwide

**> 700 000 h** MTBF provides maximum reliability for your business

Over **4000 product** references, including the one that suits your installation

**5 generations** of Transfer Switching Equipment and always innovating for you

# Why choose **Socomec**?

---



For all types of **sources**

- Utility
- Genset
- PV
- Battery
- UPS



For all types of **loads**

- Alternating current (AC)
- Direct current (DC)



For compliance with **international standards**

- IEC
- UL
- GB



For all your **integration needs**

- Open type
- Enclosed solutions

# Manual Transfer Switching Equipment (MTSE)

from 25 to 3200 A



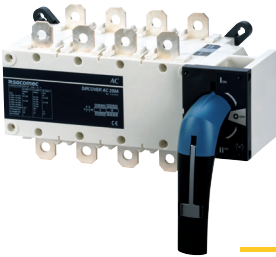
## **SIRCO M**

- 25 to 125 A.
- Modular design.
- 3 or 4 pole.
- DIN rail or back plate mounting.



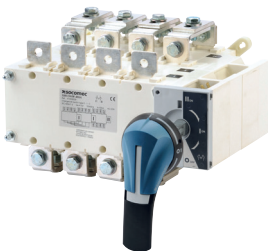
## **SIRCO VM1**

- 63 to 125 A.
- Visible break.
- 3 or 4 pole.
- DIN rail or back plate mounting.



## **SIRCOVER**

- 125 to 3200 A.
- I-0-II / I-I+II-II.
- 3 or 4 pole.
- Back plate mounting.
- UL 1008 version available.

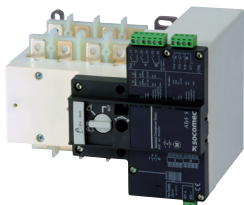


## **SIRCOVER Bypass**

- 125 to 1600 A.
- I-0-II / I-I+II-II.
- 3 or 4 pole.
- Back plate mounting.

# Remote Transfer Switching Equipment (RTSE)

from 40 to 6300 A



## *ATyS S & d S*

- 40 to 125 A.
- AC or DC supply.
- Replaceable motor.
- Back plate mounting.

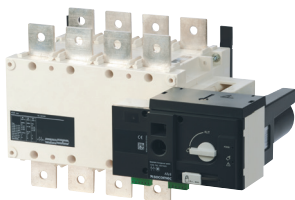
or



## *ATyS d M*

- 40 to 160 A.
- Modular design.
- 2 or 4 pole.
- DIN rail or back plate mounting.

or



## *ATyS r*

- 125 to 3200 A.
- Replaceable motor.
- 3 or 4 pole.
- Back plate mounting.
- UL 1008 version available.

+



## *ATyS C*

ATS Controller for Transfer Switching Equipment



## *ATyS d H*

- 4000 to 6300 A.
- 3 or 4 pole.
- Fixed or withdrawable.
- To be mounted in the enclosure of your choice.

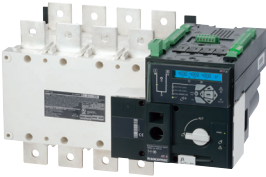
# Automatic Transfer Switching Equipment (ATSE)

from 40 to 3200 A



## *ATyS t M, g M & p M*

- 40 to 160 A.
- Modular design.
- 2 or 4 pole.
- DIN rail or back plate mounting.
- Connected product.



## *ATyS g & p*

- 125 to 3200 A.
- Replaceable motor.
- 3 or 4 pole.
- Back plate mounting.
- Connected product.



## *ATyS Bypass*

- 40 to 3200 A.
- Enclosed system.
- ATyS p/p M based.
- 3 or 4 pole.
- ATSE Maintenance & test with no downtime.

# Static Transfer Switches (STS)

from 16 to 1800 A



## *STATYS*

- Single-phase or three-phase.
- Rack mounting or enclosure.
- Hot swap.

# DC applications transfer switches

from 40 to 1000 A



Renewable power

## *SIRCOVER PV*

- 200 to 630 A.
- 1000 VDC - PV.
- Manual DC Transfer Switch.



Railway

## *ATyS S DC*

- 40 to 360 A.
- 24 VDC.
- Remote DC Transfer Switch.



Battery charger

## *ATyS r DC*

- 400 to 1000 A.
- 125 VDC.
- Remote DC Transfer Switch.

# Socomec: our innovations supporting your energy performance

**1**  
independent  
manufacturer

**3,600**  
employees  
worldwide

**10** % of sales  
revenue dedicated  
to R&D

**400** experts  
dedicated to  
service provision

## Your power management expert



POWER  
SWITCHING



POWER  
MONITORING



POWER  
CONVERSION



ENERGY  
STORAGE



EXPERT  
SERVICES

## The specialist for critical applications

- Control, command of LV facilities
- Safety of persons and assets
- Measurement of electrical parameters
- Energy management
- Energy quality
- Energy availability
- Energy storage
- Prevention and repairs
- Measurement and analysis
- Optimisation
- Consultancy, commissioning and training

## A worldwide presence

**12**  
production sites

- France (x3)
- Italy (x2)
- Tunisia
- India
- China (x2)
- USA (x3)

**28**  
subsidiaries and  
commercial locations

- Algeria • Australia
- Belgium • China • Canada
- Dubai (United Arab Emirates)
- France • Germany • India
- Indonesia • Italy • Ivory Coast
- Netherlands • Poland • Portugal
- Romania • Serbia • Singapore
- Slovenia • South Africa • Spain
- Switzerland • Thailand • Tunisia
- Turkey • UK • USA

**80**  
countries  
where our brand  
is distributed

### HEAD OFFICE

#### SOCOMEK GROUP

SAS SOCOMEK capital  
10585900 €  
R.C.S. Strasbourg B 548 500 149  
B.P. 60010 - 1, rue de Westhouse  
F-67235 Benfeld Cedex  
Tel. +33 3 88 57 41 41 - Fax +33  
3 88 57 78 78  
info.scp.isd@socomec.com

### YOUR DISTRIBUTOR / PARTNER

[www.socomec.com](http://www.socomec.com)



**socomec**  
Innovative Power Solutions